

**Caution:**  
Do not mark on the phantom with pen or leave printed materials contacted on its surface.  
Ink marks on the phantom will be irremovable.

US-10

# Female Pelvic Ultrasound Phantom

## Instruction Manual

### Contents



- **Please read before training**
  - General information ..... P.1
- **Training**
  - 1. Training session ..... P.2
- **Change the module**
  - 1. Change the module ..... P.3
- **After training**
  - 1. After training ..... P.4-P.5

The pelvic phantom is unique in that it allows for transabdominal and transvaginal scanning. Though transvaginal scanning is the gold standard for gyn and 1st trimester pregnancy, it is still important to recognize the anatomy from the transabdominal aspect, as patients may present with anatomy and/or pathology that is outside the transvaginal field of view. The transabdominal technique is still a valuable part of assessing the female pelvis. This phantom also provides imaging of normal and abnormal anatomy so that normal protocol can be practiced while still learning to recognize life threatening pathology, such as an ectopic pregnancy. Other pathology such as endometrial cancer and ovarian cysts can also be identified. In a learning environment, this phantom provides a balance of normal and abnormal that will assist in developing the critical thinking skills necessary to successfully evaluate the female pelvis.

#### ● Features

1. Both transvaginal and transabdominal scanning are possible.
2. Realistic manipulation of transducers
3. Two types of interchangeable phantom inserts with different pathologies.
4. Realistic view of female external genital.
5. Excellent ultrasound image quality.
6. Compatible with any ultrasound system.

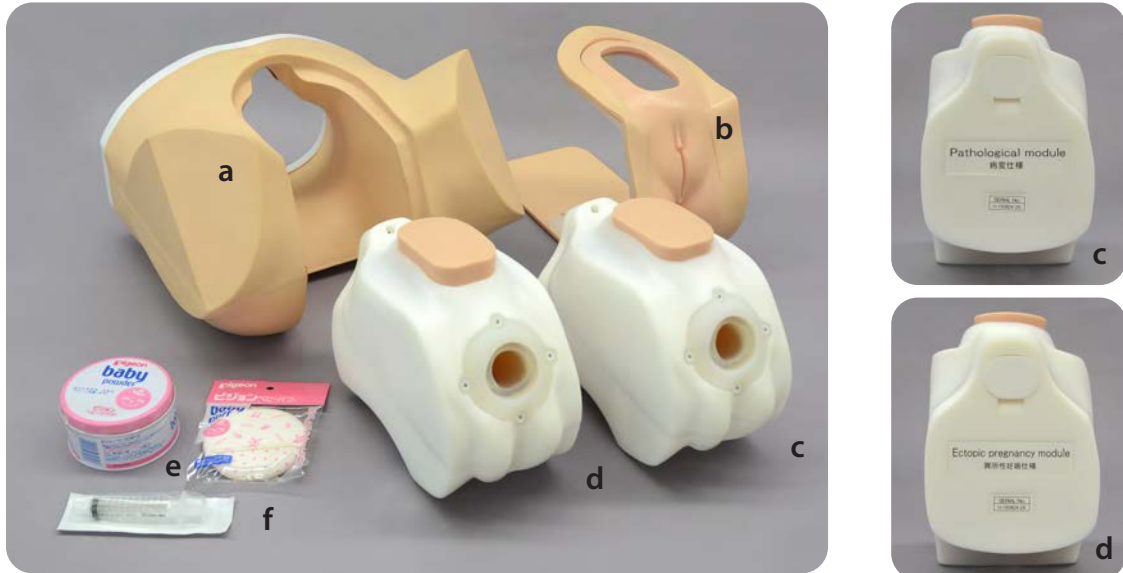
Movie Site



English Site

## Set includes

Before your first use, please ensure that you have all components listed below.



- |  |   |                        |   |
|--|---|------------------------|---|
| a. Lower torso manikin .....                 | 1 | e. Talcum powder ..... | 1 |
| b. Phantom holder .....                      | 1 | f. Syringe .....       | 1 |
| (outer and inner frame, skin)                |   | Storage case .....     | 1 |
| c. Ultrasound pathological module .....      | 1 | Instruction manual     |   |
| d. Ultrasound pregnancy ectopic module ..... | 1 |                        |   |

## DOs and DON'T s

### DO s

Handle with care  
The materials for phantom and models are special composition of soft resin. Please handle with care at all times.

#### Cleaning and care

Please clean the phantom completely every time after you finish the training. Remaining ultrasound gel on the phantom may deteriorate the product.

Keep the training set at room temperature, away from heat, moisture and direct sunlight.

### DON'T s

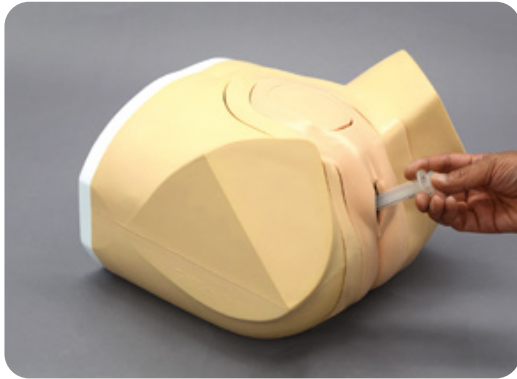
Never wipe the phantom or models with thinner or organic solvent.

Do not mark on the phantom with pen or leave printed materials contacted on their surface. Ink marks on the models will be irremovable.

Please note: The color of the phantom may change overtime. However, please be assured that this is not deterioration of the material and the ultrasonic features of the phantom will stay unaffected.

## 1 Training session

1. Fill the ultrasound module cavity with approximately 5mL of ultrasound gel using the provided syringe.



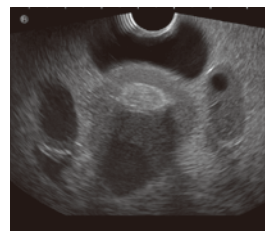
Place an absorbent material such as a towel in case of ultrasound gel overflow during preparation and training.

2. Apply the ultrasound gel on the lower abdominal area of the skin.

The phantom can be scanned with actual ultrasound devices.



Examples of ultrasound images



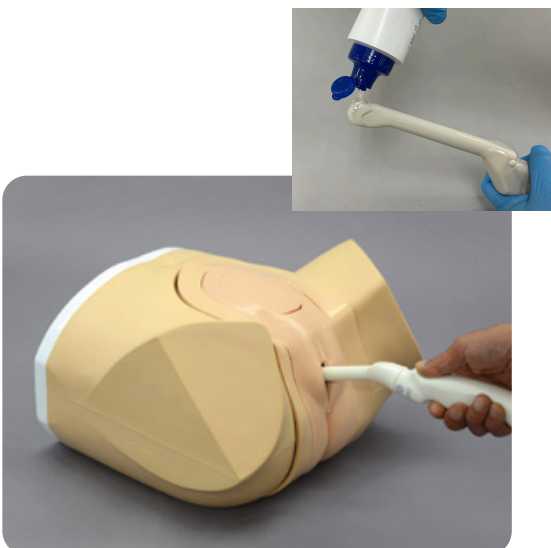
Pathological module



Ectopic pregnancy module



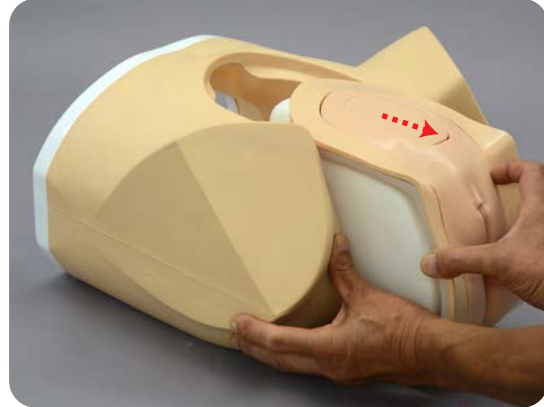
Forcing probe against vaginal wall may cause the damage to the phantom. Apply jelly to probe as same as the medical practice to reduce the damage of vaginal wall. The surface of the lower abdominal area for scanning may be slightly deformed with time, but there is no problem in use.



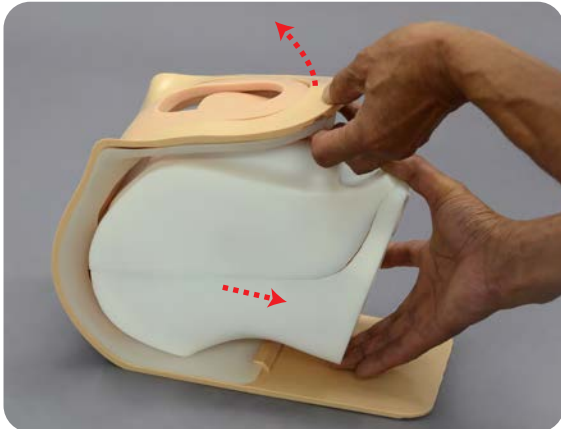
# Change the module

## 1 Change the module

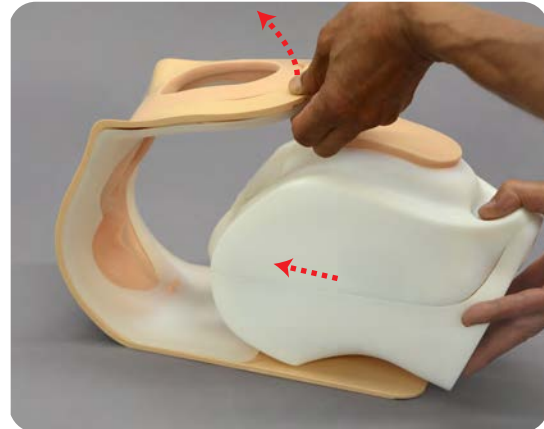
1. Insert your hand between the lower torso manikin and phantom holder and pull them apart, along with the ultrasound pathology/ectopic module.



2. Lift the frame of the phantom holder and tilt the ultrasound module downward to pull out.



3. Lift the frame of the phantom holder to push another ultrasound module into the frame.



4. Lift and adjust to fit the bottom contour of the ultrasound module with the frame.

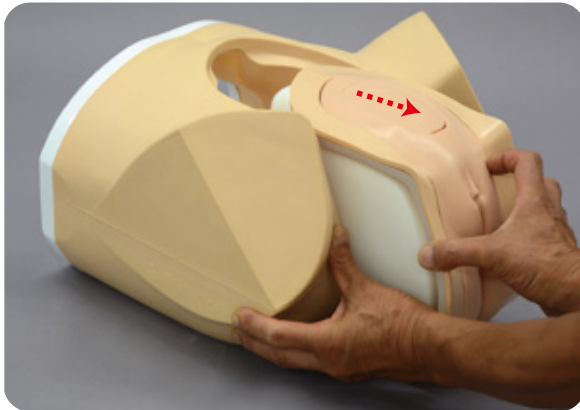


5. Set the upper part of the ultrasound module with the frame.

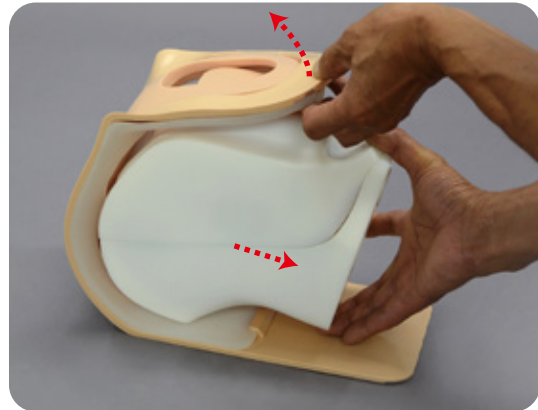


## 1 After training

1. Wipe the remaining gel on the torso and the skin completely with wet tissues and remove the assembled unit from the lower torso manikin.



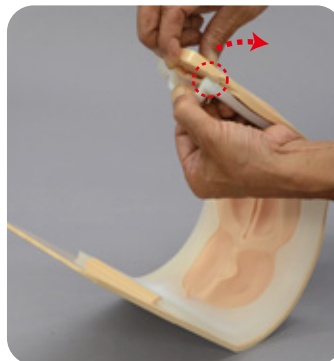
2. Remove the ultrasound module from phantom holder.



3. Pour tap water into the cavity, then discard the water inside to rinse the model. Repeat it 2-3 times.



4. Take the phantom holder apart by lifting the outer frame and pulling down the skin with its inner frame.



Do not pull just the skin before taking the frame apart. Pulling just skin may cause tearing.

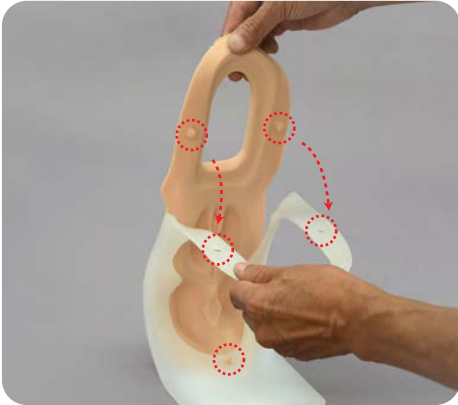
5. Wipe the remaining gel on the inner side of the skin.



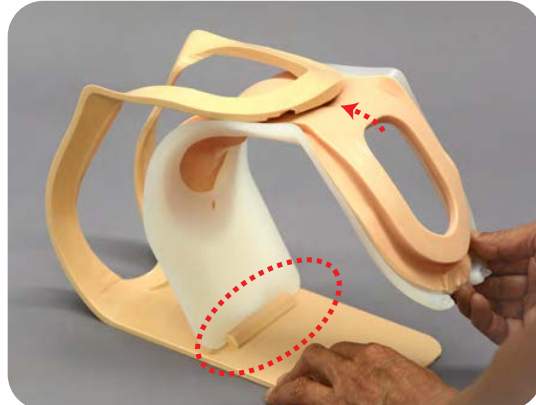
Once the remaining gel is removed from all components, dry them completely and apply talcum powder. Then, reassemble the phantom unit and set it to the torso. Store the assembled phantom in the provided case.

## 4 Assembly for storage

1. Put the skin over the inner frame and insert two upper projections of the skin in two upper holes of the frame.



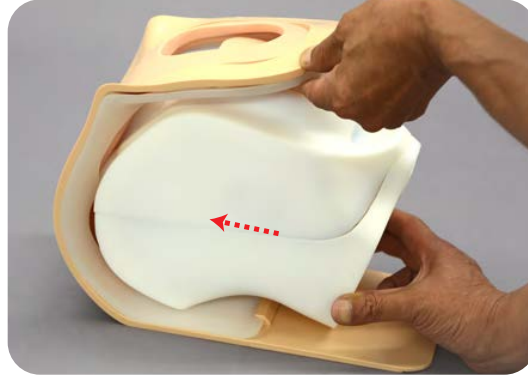
2. Set the lower edge of the inner frame to the stopper on the outer frame. Then, holding the inner frame firmly, push it forward.



3. Then engage the frames by pushing the corner of the outer frame forward, until a clicking sound is heard.



4. Lift the frame of the phantom holder to push the ultrasound module into the frame.

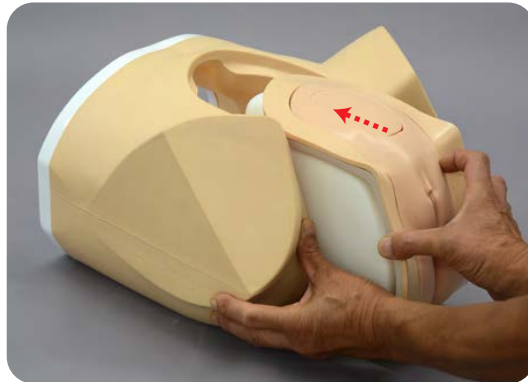


**Do not pull just the skin while putting it between frames. Pulling just skin may cause tearing.**

5. Lift and adjust to fit the bottom contour of the ultrasound module with the frame.



6. Set the unit to the lower torso manikin.



Then engage the frames by pushing the corner of the outer frame forward, until a clicking sound is heard.



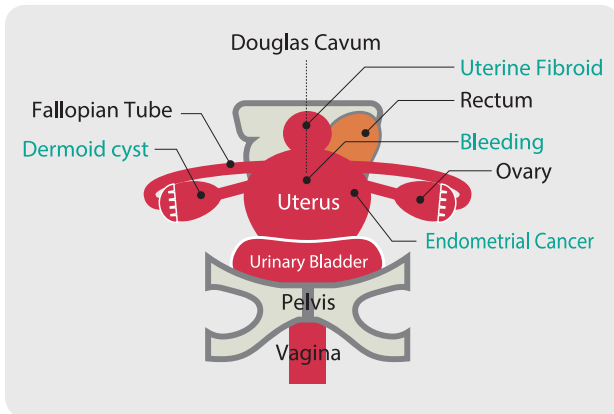
**Caution**

Don't mark on the phantom with pen or leave printed materials contacted on its surface. Ink marks on the phantom will be irremovable.

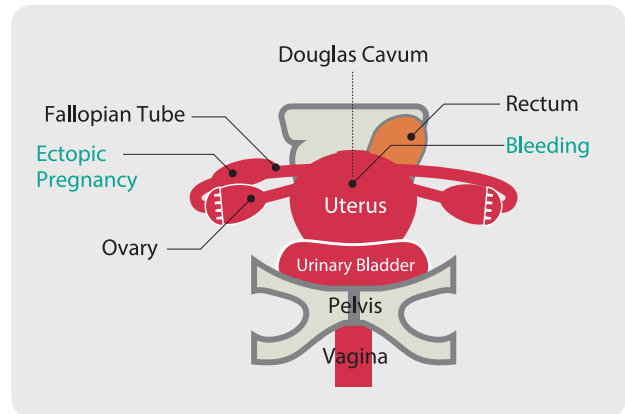
The contents of this manual are subject to change without prior notice.

No part of this instruction manual may be reproduced or transmitted in any form without permission from the manufacturer. Please contact manufacturer for extra copies of this manual which may contain important updates and revisions.

Please contact manufacturer with any discrepancies, typos, or mistakes in this manual or product feedback. Your cooperation is greatly appreciated.



Pathological module



Pregnancy ectopic module



■ Main Office and Factory (World Wide)



WEB • [www.kyotogagaku.com](http://www.kyotogagaku.com)

E-MAIL • [rw-kyoto@kyotokagaku.co.jp](mailto:rw-kyoto@kyotokagaku.co.jp)

15 kitanechoya-cho Fushimi-ku Kyoto 612-8388, Japan

TEL: +81-75-605-2510

FAX: +81-75-605-2519

■ North and South American regions:



WEB • [www.kkamerica-inc.com](http://www.kkamerica-inc.com)

E-MAIL • [info@kkamerica-inc.com](mailto:info@kkamerica-inc.com)

3109 Lomita Boulevard, Torrance, CA 90505-5108, USA

TEL: +1-310-325-8860

(Toll-free in North America: 877-648-8195)

FAX: +1-310-325-8867